



The Institution of Engineers, Malaysia

IEM

WE
WOMEN
ENGINEERS

hsg
ENGINEERS

INTERNATIONAL WOMEN'S DAY 2026

ARTWORK DESIGN COMPETITION

THEME: GIVE TO GAIN

Calling for Participants

The Women Engineers Section (WES) of The Institution of Engineers, Malaysia (IEM) is organising an Artwork Design Competition in conjunction with International Women's Day.

**WINNING POSTERS WILL BE
DISPLAYED IN IEM WE'S LOUNGE.**

**CLICK THE GOOGLE LINK TO
REGISTER TODAY!**

<https://forms.gle/bZSVkDn2tWhsbLJZ7>

OPEN TO ALL

REGISTRATION FEES: RM 10

**SUBMISSION IS OPEN UNTIL 31 MARCH 2026.
E-CERTIFICATE PROVIDED TO ALL PARTICIPANTS**



Artwork Format
210mm(w) x 297mm(h), A4 size
with a minimum resolution of
2480 x 3508 pixels at 300dpi
in pdf, png, or jpeg format

PRIZES
1st : RM 300
2nd : RM 200
3rd : RM 100

#IWD2026
#myiem
#iemwomenengineers
#GiveToGain



<http://www.myiem.org.my>



IEM Women Engineers Section (IEM WE)



IEM Women Engineers



The Institution of Engineers, Malaysia

IEM

WE

WOMEN
ENGINEERS

hsg

ENGINEERS

ARTWORK DESIGN COMPETITION

THEME: GIVE TO GAIN

COMPETITION GUIDELINES

Eligibility:

- The competition is open to all interested participants, with unlimited entries allowed at a non-refundable registration fee of RM10 / entry. Payment method can be found in the registration link.

Technical Specifications and Requirements:

- Entries must be in A4 Portrait format (210mm W x 297mm H). The minimum required resolution is 2480 x 3508 pixels at 300dpi.
- Each artwork must be accompanied by an inspirational quote of no more than 20 words and must include the word "engineer" or "engineers."
- The artwork and quote must meaningfully reflect the theme "Give to Gain" and celebrate the contribution of women engineers.

Originality:

- Participants may utilize any preferred graphic design software. However, all entries must be original works. Any form of plagiarism will result in immediate disqualification.
- Designs must remain professional and respectful. The organizer reserves the right to disqualify entries containing sensitive, political, or offensive elements.

Legal and Privacy:

- By entering the contest, participants grant the organisers full and exclusive copyright of the artwork. The organizer retains the right to use, reproduce, and modify the designs for promotional or commercial purposes without further compensation.



CONTACT

✉ sitiaisyah@iem.org.my
sec@iem.org.my

Women Engineers Section
The Institution of Engineers, Malaysia
Bangunan Ingenieur, 60/62 Jalan 52/4, Peti
Surat 223, Jalan Sultan,
46720 Petaling Jaya, Selangor Darul Ehsan,
Malaysia.

☎ Telephone: 03-78900133 (DL)



<http://www.myluem.org.my>



IEM Women Engineers Section (IEM WE)



IEM Women Engineers



The Institution of Engineers, Malaysia

IEM

WE
WOMEN
ENGINEERS

hsg
ENGINEERS

ARTWORK DESIGN COMPETITION

THEME: GIVE TO GAIN

COMPETITION GUIDELINES:

Submission Guidelines:

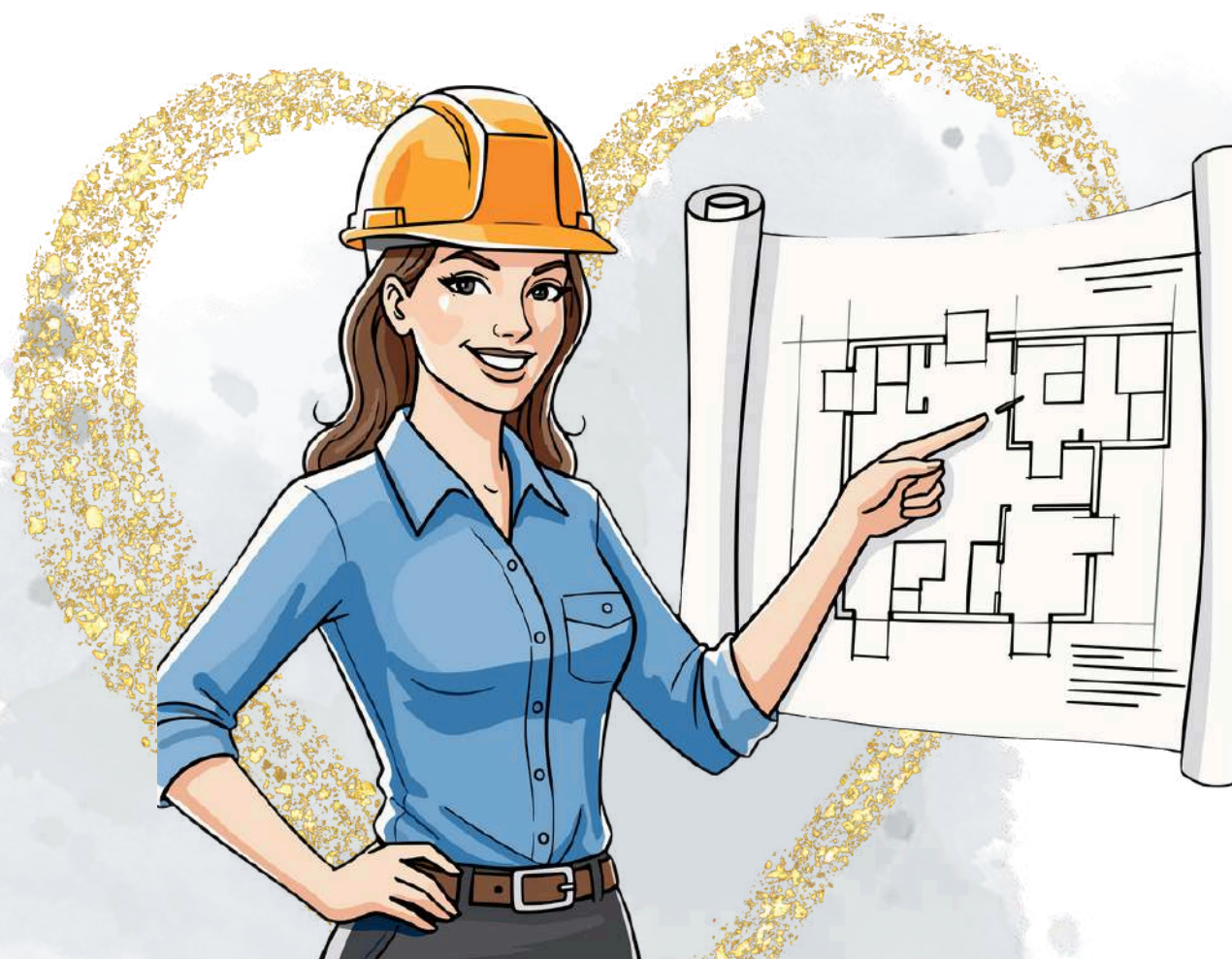
- The final artwork must be saved using the participant's full name and submitted via the registration link. A copy of the same artwork must also be emailed to sitiaisyah@iem.org.my in PDF, PNG, or JPEG format.
- Participants must post their artwork on their personal Facebook or Instagram account and ensure the post is set to public. The post must include the hashtags #myiem, #GiveToGain, #IWD2026, and #iemwomenengineers.
- Participants are required to tag @IEM Women Engineers Section (IEM WE) on Facebook or @IEM Women Engineers on Instagram in their post.

Judging Process:

- Entries will be judged based on the criteria outlined.
- Evaluation will be conducted by a panel of appointed experts. The judges' decision is final, and no correspondence or appeals will be entertained.

Announcement of Winners:

- The winner will be announced on 8 April via the organiser's official social media platforms and will be contacted accordingly through the relevant communication channels.



CONTACT

✉ sitiaisyah@iem.org.my
sec@iem.org.my

Women Engineers Section
The Institution of Engineers, Malaysia
Bangunan Ingenieur, 60/62 Jalan 52/4, Peti
Surat 223, Jalan Sultan,
46720 Petaling Jaya, Selangor Darul Ehsan,
Malaysia.

☎ Telephone: 03-78900133 (DL)



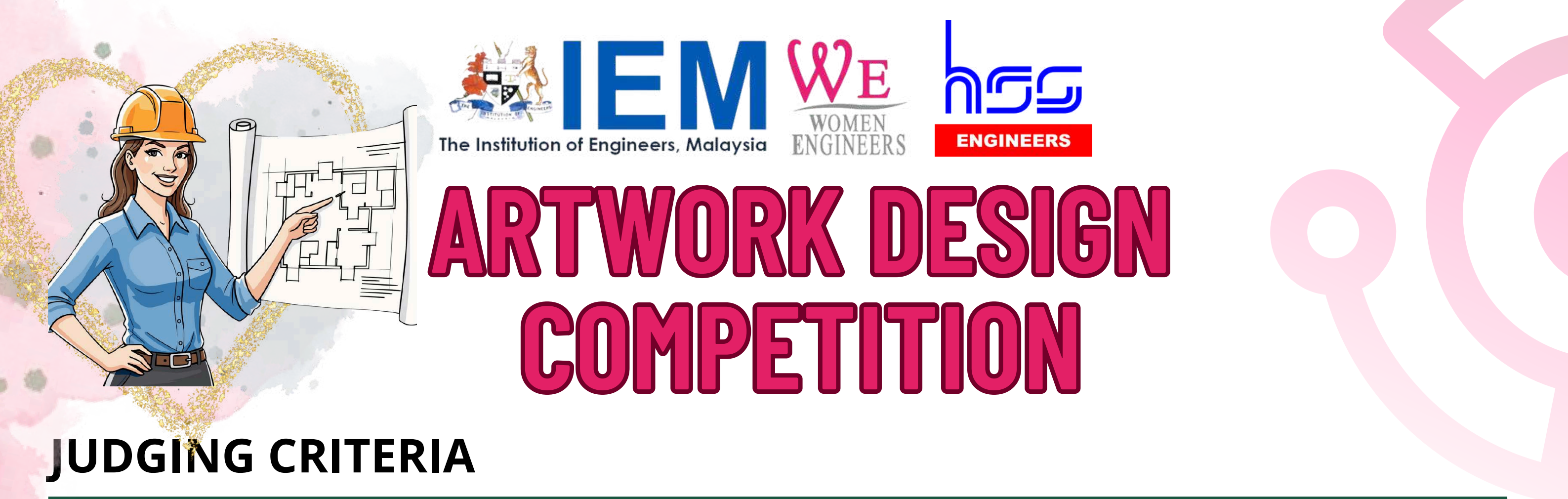
<http://www.myiem.org.my>



IEM Women Engineers Section (IEM WE)



IEM Women Engineers



JUDGING CRITERIA

Criteria	Description	Weightage
Creativity and Originality	Creativity, uniqueness and originality of the design	20%
	Creative use of elements, such as color, typography, and imagery	
Relevance to Theme	Alignment with the theme of International Women’s Day 2026: Give to Gain	30%
	Clear representation of inspirational quote	
Adherence to Specifications	Compliance with guidelines or requirements of the competition	10%
	Proper sizing, resolution, and format	
Overall Impact	The overall impression and lasting impact	20%
	Memorable and engaging qualities that make it stand out	
Clarity and Readability	Clear communication of key information	20%
	Legibility of text, ensuring that it can be easily read	
	Thoughtful placement of text, images, and other graphic elements	
	Quality and relevance of images or illustrations used	



**GIVE WOMEN ENGINEERS THE
SPACE,
THE SOCIETY GAINS STRENGTH
AND GRACE.**



Happy International Women's Day

SAMPLE