



IEM

WE
WOMEN
ENGINEERS

The Institution of Engineers, Malaysia

WOMEN IN ENGINEERING DAY POSTER DESIGN COMPETITION 2025

Open to ALL
University
Students
(3 pax per team)

“CELEBRATING WOMEN AT THE HEART OF INNOVATION AND ENGINEERING”

The International Women in Engineering Day (INWED) celebrates the achievements of women engineers worldwide. This poster competition invites students to design a creative and inspiring poster highlighting a female role model who has made a significant contribution to innovation and engineering. Finalists are invited to present their posters for a chance to win exciting prizes.

IMPORTANT DATES

- ★ Open for Submissions
- ★ Submission Deadline
- ★ Jury Review
- ★ Finalists Announced

15 April 2025

15 June 2025

16–23 June 2025

25 June 2025

Poster Format:
A0 Size (Portrait)
84.1 CM (W) X
118.9 CM (H)



Participation Fee:
RM 150 per team

Final Presentation & Award Ceremony

5th July 2025 (Saturday) @ 8.30am – 1pm
Professor Chin Fung Kee Auditorium,
3rd floor, Wisma IEM





IEM

WE
WOMEN
ENGINEERS

The Institution of Engineers, Malaysia

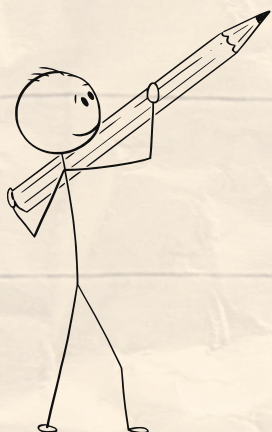


WHO CAN PARTICIPATE?

- Open to university students
- Max 3 students per team

Poster Must Include:

- ✓ Introduction of a female inspirational role model.
- ✓ Challenges she faced & how she overcame them.
- ✓ Her contributions to engineering, innovation, and technology.
- ✓ How she shattered stereotypes & improved women's quality of life.
- ✓ Lesson learned from the female role model that inspire the team's approaches to support women's STEM identity.



PRIZE FOR WINNERS!



CHAMPION

RM 500 Cash
Printed Winner
Certificate

HIGH COMMENDABLE (2 WINNERS)

RM 300 Cash
Printed Winner
Certificate

**ALL PARTICIPANTS WILL BE AWARDED A DIGITAL CERTIFICATE
FINALISTS WILL BE AWARDED FINALIST CERTIFICATE**

Scan here to
register &
submit your
poster



For inquiry : 03-78900133 | syahlini@iem.org.my

Judging Criteria

	Criteria	Description	Score (%)
POSTER	Creativity & Originality	Does the poster present a unique and innovative idea? Does it creatively express the theme?	10
	Relevance to Theme	Does the poster effectively represent the spirit of International Women in Engineering Day?	10
	Visual Impact & Aesthetics	Is the design visually appealing, well-balanced, and engaging? Are colors, fonts, and layout used effectively?	10
	Clarity & Communication	Is the message clear and easy to understand? Does the poster effectively convey its intended meaning?	10
	Content & Informational Value	Does the poster include meaningful information, facts, or figures that educate or inspire the audience?	10
	Overall Presentation & Impact	How well does the poster leave a lasting impression? Does it inspire, educate, or create awareness?	10
PRESENTATION	Clarity of Speech & Pronunciation	Is the presenter speaking clearly, confidently, and at a good pace?	10
	Engagement & Audience Interaction	Does the presenter engage with the audience, maintain eye contact, and show enthusiasm?	10
	Ability to Answer Questions	Can the presenter respond to judges' questions with clarity and confidence?	10
	Structure & Organization	Is the presentation well-structured with a logical flow from introduction to conclusion? Does the presenter stay within the given time limit and avoid unnecessary details?	10
		TOTAL	100

Agenda

Date: 5th July 2025

Venue: Chin Fung Kee Auditorium, Wisma IEM

Time	Description
8.00 – 9.00 am	Registration of Finalists
9.00 – 9.30 am	Opening Remarks by IEM-WE Chairlady
9.30 – 11.30 am	Group Presentation (10 mins presentation + 5 mins Q&A per group)
11.30 am – 11.45 pm	Break
11.45 am – 12.15 pm	Inspirational Talk by Women Engineer (to be proposed) Note: Scoring will be done concurrently
12.15 pm – 12.30 pm	Award Presentation
12.30 pm – 1.00 pm	Closing remarks and photography session