

# THE INSTITUTION OF ENGINEERS, MALAYSIA

Bangunan Ingenieur, Lot 60/62, Jalan 52/4 Peti Surat 223, 46720 Petaling Jaya, Selangor Darul Ehsan  
Tel : 03-79684001/2 Fax : 03-79577678 E-mail : sec@iem.org.my IEM Homepage: <http://www.myiem.org.my>



## TECHNICAL VISIT TO ULU JELAI HYDROELECTRIC PROJECT (UJHEP)

(Organised by : Seniors Special Interest Group, IEM)

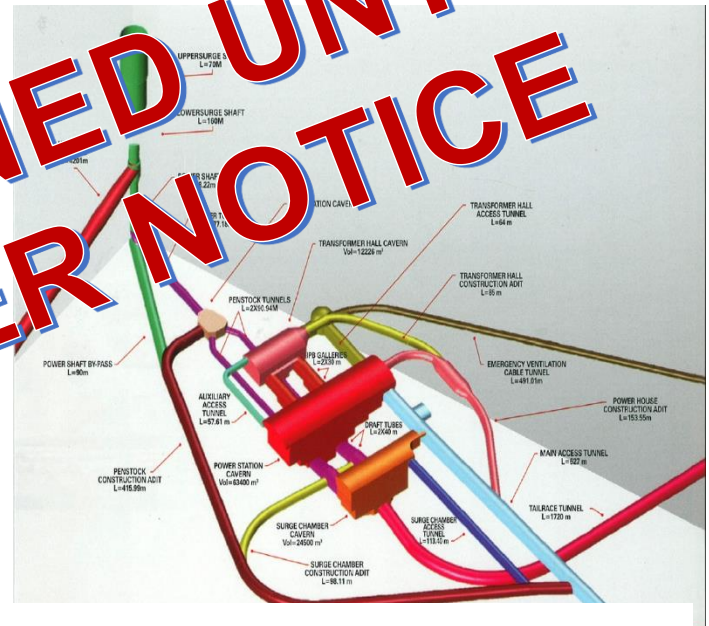
BEM Approved CPD/PDP hours: 4 hours Ref No : IEM18/HQ/421/V

Date : 28 & 29 October 2018 (Sunday & Monday) **POSTPONED UNTIL FURTHER NOTICE**  
Time : 8.00am  
Venue : Engineering Site Office, Ulu Jelai Hydroelectric Project, Cameron Highlands

Transport: Coach will be provided. Participants are required to **assemble** at **7.30 a.m.**, Wisma IEM, Petaling Jaya. The coach will **depart** from IEM at **8.00 a.m. sharp**.

### PROJECT BRIEF

The project is located in the state of Pahang, in the district of the Cameron Highlands about 140 km north of Kuala Lumpur and 80 km to the west coast of mainland Malaysia. The main features of the project are the Susu Dam – an 88m high Roller Compacted Concrete (RCC) dam on Sg. Bertam, two diversion weirs on Sg. Lemoi and Sg. Telom for the diversion of flows from adjacent catchments via 7.5km and 8.5km long transfer tunnels into Sg. Bertam, to transfer water to Susu dam, power tunnels and an underground power house cavern. The installed capacity of 372 MW with an average annual energy supply of 356 GWh. It also includes the required associated water conveyance and access road system. The hydroelectric development generates peaking energy to the national grid.



**POSTPONED UNTIL FURTHER NOTICE**

**TENTATIVE ITINERARY** – (subject to change without prior notice)

<b>28<sup>th</sup> October 2018 – Sunday</b>	
7.30am	Registration at IEM Bangunan Ingenieur
8.00am	Journey from IEM to Cameron Highlands
1.00pm	Lunch/Free and easy in Cameron Highlands

<b>29<sup>th</sup> October 2018 – Monday</b>	
8:00am	Depart to Ulu Jelai Hydroelectric Site Office
9.00am	Arrive at Ulu Jelai Hydroelectric Site Office
9.00am – 9.45am	Safety Briefing & Project Briefing
9.45am – 10.00am	Refreshment
10.00am – 11.00am	Site Visit to Power Station
11.00am – 11.30am	Site Visit to Lembeh Cut-off
11.30am – 1.00pm	Site Visit to Power Transfer Tunnel (Subject to site availability), Site Visit to Sulu Dam, Photo Session
1.00pm – 2.00pm	Lunch
2.00pm	End of visit
7.00pm	Reach IEM

- PRICE INCLUDES**
1. Travel insurance
  2. Items not covered herein such as extra expenses incurred due to disruption of travel plan, departure, casual entry, sickness, death, riot, act of nature, rumours, war, and diseases.
  3. All personal incidental such as room services, laundry, beverage and telecommunication bills.
  4. Breakfast/Lunch/Dinner
  5. **Personal protective equipment.**

- The visit is strictly limited to **16 participants** registered on a first-come, first-served basis.
- Interested participants are to register and pay online at [www.myiem.org.my](http://www.myiem.org.my) or register by returning the appended registration form **before 22<sup>nd</sup> October 2018** together with the payment.
- Cheques are to be made payable to **The Institution of Engineers, Malaysia.**
- Please note that the commitment fee must be settled prior to the visit.
- After this closing date, IEM reserves the right to allocate seats on first come first pay basis.
- Members are also reminded that IEM **MAY** cancel the reservation if payment is not received before the closing date

**SAFETY REMINDER:** Please be advised that all participants are to adhere to all safety procedures, signs and regulation at all time. TNB will not accept any liability and be held responsible for any accident that may cause bodily injury, death, damages, loss, delay, cost, expenses or any inconvenience arising from this visit.

**Ir. Chong Kwet Hin**  
**Chairman**  
**Seniors Special Interest Group, IEM**

**REGISTRATION FORM**  
**TECHNICAL VISIT TO ULU JELAI HYDROELECTRIC PROJECT (UJHEP)**  
**(Organised by : Seniors Special Interest Group, IEM)**

CLOSING DATE:  
**22<sup>nd</sup> OCTOBER 2018**  
 (First come, first served  
 basis, max 16 participants)

No.	Participant Name	NRIC	Grade & IEM Membership No.	Participation Fees IEM Members: RM120.00 Non IEM Members: RM200.00 <i>(fees include transportation)</i>	Hotel (Rainbow Brinchang, Cameron Highlands)  Twin sharing RM130.00 nett (with breakfast) – <b>KINDLY EMAIL THIS FORM FOR ROOM RESERVATION</b>	Total Payable (RM)

POSTPONED UNTIL FURTHER NOTICE

Email	Contact Number (HP)

Enclosed herewith a crossed cheque No: \_\_\_\_\_ for the sum of RM \_\_\_\_\_ issued in favour of "The Institution of Engineers, Malaysia" and crossed 'A/C payee only' being registration fee for the visit.

Or  
 Enclosed herewith an online back transfer acknowledgement for "The Institution of Engineers, Malaysia"

**I/we will be participating in the visit at our/my own risk and hereby indemnify fully the IEM from all claims arising from any injury, damage or loss that may be sustained by me/us.**

\_\_\_\_\_  
 Signature of participant \_\_\_\_\_  
 Date

**Photocopies are acceptable**

Fax: 03-7957 7678 Email: [zainun@iem.org.my](mailto:zainun@iem.org.my)